

[View PDF](#)

Underglaze

Printing in a single color on earthenware and stoneware 1780-1820

[Add to My Gallery](#) | [Create an Album](#)



**Pattern**



[enlarge \[+\]](#)

### Source



[enlarge \[+\]](#)

### Source Description:

The source for the printed pattern on this dinner plate was this "elephant folio" size aquatint, plate 29, in *Oriental Field Sports* by Thomas Williamson (author) and Samuel Howitt (artist), published in 1807 by Edward Orme, London. Spode introduced the series sometime between 1807 and 1809.

Shape Type

Dinner & Dessert Wares

Pattern Type

Chinese, Asian and Other Exotic Themes

Date

1807-1809

Dimensions

- Diameter: 10.00 in (25.40 cm)

Maker

Spode

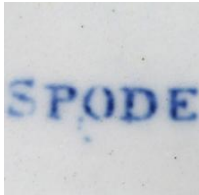
### Maker's Mark:

DEATH OF THE BEAR

Printed

[enlarge \[+\]](#)

### Maker's Mark:



Printed

[enlarge \[+\]](#)

### Description:

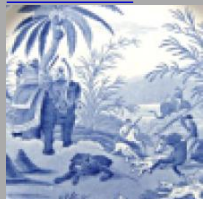
An earthenware dinner plate printed in blue underglaze with Death of the Bear from Spode's Indian Sporting Series. This is the most common pattern and shape in the series. In addition to the two printed marks shown here, it also has an impressed SPODE mark.

[BACK TO CATALOG INDEX](#)



Printing in a single color on earthenware and stoneware 1780-1820

[View All](#)



Chinese, Asian and Other Exotic Themes

[View All](#)



Indian Sporting - Spode

[View All](#)



Examples by Maker

[View All](#)



Print Type Indexd

[View All](#)