

[View PDF](#)

Underglaze

Printing in a single color on earthenware and stoneware 1780-1820, printed and painted

[Add to My Gallery](#) | [Create an Album](#)



Pattern



[enlarge \[+\]](#)

Source

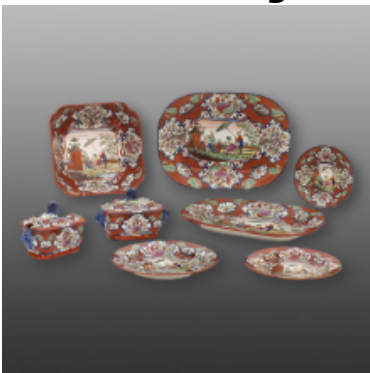


[enlarge \[+\]](#)

Source Description:

Source Print:Artist: Jean Pillement. The Ladies Amusement; or, Whole Art of Japanning Made Easy, first edition published by Robert Sayer, London, 1759, This image is from a facsimile of the second edition of 1762, published in 1966, page 54.

Additional Image:



[enlarge \[+\]](#)

A partial dinner service in The Apothecary pattern.

Shape Type

Dinner & Dessert Wares

Pattern Type

Chinese, Asian and Other Exotic Themes

Date

1810-1820

Dimensions

- Diameter: 8.25 in (20.96 cm)

Maker

Unknown

Description:

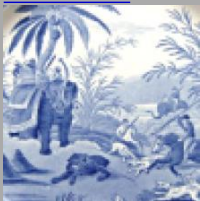
A pierced earthenware dessert dish with a molded basket weave outer border. It is printed in black underglaze with overglaze enameling. The molded sections of the outer border are highlighted with blue, turquoise and red. This pattern is recorded in the Transferware Collectors Club Pattern and Source Print Database as The Apothecary. The central pattern is surrounded by a wide inner border of four *expand* [+]

[BACK TO CATALOG INDEX](#)



Printing in a single color on earthenware and stoneware 1780-1820

[View All](#)



Chinese, Asian and Other Exotic Themes

[View All](#)



Examples by Maker

[View All](#)



Printed & Painted

[View All](#)



Print Type Indexd

[View All](#)