

[View PDF](#)

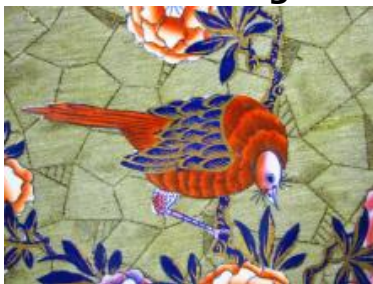
Underglaze

Printing in multiple colors

[Add to My Gallery](#) | [Create an Album](#)



Additional Image:



[enlarge \[+\]](#)

This close up of a section of the pattern provides a magnified view of the multi-color printed pattern. The white areas next to the blue printed lines reveal areas masked out with a sticky substance known as 'ackey' that resisted the printing of the sheet pattern resulting in small areas where no ink was applied.

Shape Type

Dinner & Dessert Wares

Pattern Type

Animals

Date

1823-1833

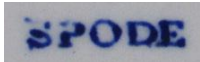
Dimensions

- Diameter: 8.00 in (20.32 cm)

Maker

Spode

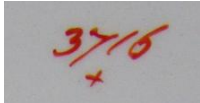
Maker's Mark:



Printed

[enlarge \[+\]](#)

Maker's Mark:



Painted

[enlarge \[+\]](#)

Description:

A bone china dessert dish printed in blue with Spode's popular Tumbledown Dick pattern along with a chrome green sheet pattern named Cracked Ice, also known as Marble. It is pattern number 3716. The pattern is printed in blue and then ackeyed and reprinted with the sheet pattern underglaze. It was then painted before glazing. Some gilt decoration was then added.

[BACK TO CATALOG INDEX](#)



Printing in multiple colors

[View All](#)



Animals

[View All](#)



Examples by Maker

[View All](#)



Print Type Indexd

[View All](#)