

[View PDF](#)

Overglaze

Printing on Porcelain 1800-1900, printed and painted

[Add to My Gallery](#) | [Create an Album](#)



collection of The Potteries Museum and Art Gallery, Stoke on Trent

Additional Image:



[enlarge \[+\]](#)

The second side of the sugar box with a slightly smaller flower group.

Shape Type

Breakfast & Tea Wares

Pattern Type

Plants

Date

1842-1850

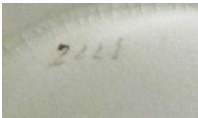
Dimensions

- Height: 18.50 in (46.99 cm)

Maker

G. F. Bowers

Maker's Mark:



Painted

[enlarge \[+\]](#)

Description:

A sugar box outline printed and colored with an arrangement of various flowers and smaller secondary sprays. All the moulding is picked out in gold.

[BACK TO CATALOG INDEX](#)



Printing on Porcelain 1800-1900

[View All](#)



Plants

[View All](#)



Examples by Maker

[View All](#)



Printed & Painted

[View All](#)



Print Type Indexd

[View All](#)