

[View PDF](#)

Underglaze

Printing in a single color on earthenware and stoneware 1820-1850, printed and painted

[Add to My Gallery](#) | [Create an Album](#)



Shape Type

Dinner & Dessert Wares

Pattern Type

Chinese, Asian and Other Exotic Themes

Date

1821-1833

## Dimensions

- Diameter: 9.63 in (24.46 cm)

Maker

Spode

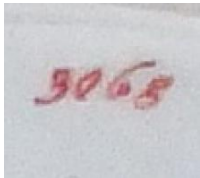
### Maker's Mark:



Printed

[enlarge \[+\]](#)

### Maker's Mark:



Painted

[enlarge \[+\]](#)

### Description:

An earthenware (Spode's Stone China) plate printed in blue and enameled overglaze in the Ship pattern, pattern number 3068. The slightly earlier version of this pattern is numbered 3067. Robert Copeland observed that it was probable that this design was taken from a Chinese original porcelain painted version, as is the case with the border which is known as the Ship Border. The border

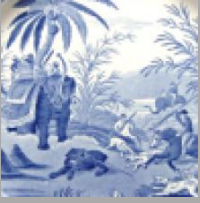
[expand \[+\]](#)

[BACK TO CATALOG INDEX](#)



Printing in a single color on earthenware and stoneware 1820-1850

[View All](#)



Chinese, Asian and Other Exotic Themes

[View All](#)



Examples by Maker

[View All](#)



Printed & Painted

[View All](#)



Print Type Indexd

[View All](#)